

## 7 發展項目的鳥瞰照片 AERIAL PHOTOGRAPH OF THE DEVELOPMENT



● 發展項目的位置  
Location of the Development

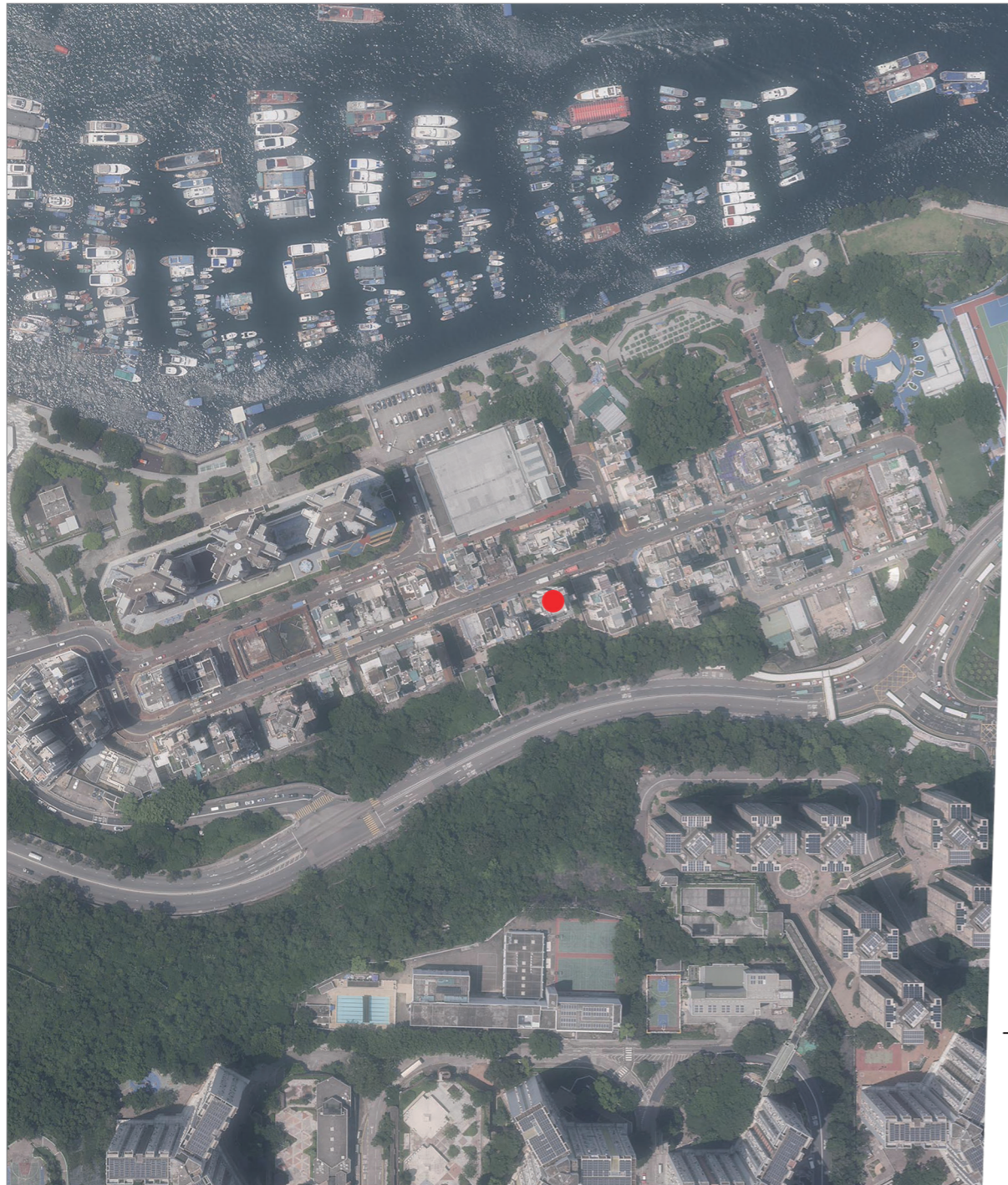
備註：因技術性問題，此鳥瞰照片所顯示的範圍超過《一手住宅物業銷售條例》的規定。  
Note : Due to technical reasons, this aerial photograph has shown more than the area required under the Residential Properties (First-hand Sales) Ordinance.

資料/地圖/鳥瞰照片由空間數據共享平台提供，香港特別行政區政府為知識產權擁有人。  
The Data/Map/Aerial Photograph is/are provided by the CSDI Portal and intellectual property rights are owned by the Government of the HKSAR.

香港特別行政區政府地政總署測繪處版權所有，未經許可，不得複製。  
Survey and Mapping Office, Lands Department, The Government of HKSAR © Copyright reserved – reproduction by permission only.

摘錄自地政總署測繪處於2023年11月22日在6,000呎飛行高度拍攝之鳥瞰照片，編號為E213116C。  
Adopted from part of the aerial photograph taken by the Survey and Mapping Office of Lands Department at a flying height of 6,000 feet, Photo No. E213116C, dated 22 November 2023.

## 7 發展項目的鳥瞰照片 AERIAL PHOTOGRAPH OF THE DEVELOPMENT



資料/地圖/鳥瞰照片由空間數據共享平台提供，香港特別行政區政府為知識產權擁有人。  
The Data/Map/Aerial Photograph is/are provided by the CSDI Portal and intellectual property rights are owned by the Government of the HKSAR.

香港特別行政區政府地政總署測繪處版權所有，未經許可，不得複製。  
Survey and Mapping Office, Lands Department, The Government of HKSAR © Copyright reserved – reproduction by permission only.

摘錄自地政總署測繪處於2024年8月7日在6,000呎飛行高度拍攝之鳥瞰照片，編號為E226254C。  
Adopted from part of the aerial photograph taken by the Survey and Mapping Office of Lands Department at a flying height of 6,000 feet, Photo No. E226254C, dated 7 August 2024.

鳥瞰照片並不覆蓋本空白範圍  
This blank area falls outside the coverage of the relevant aerial photograph

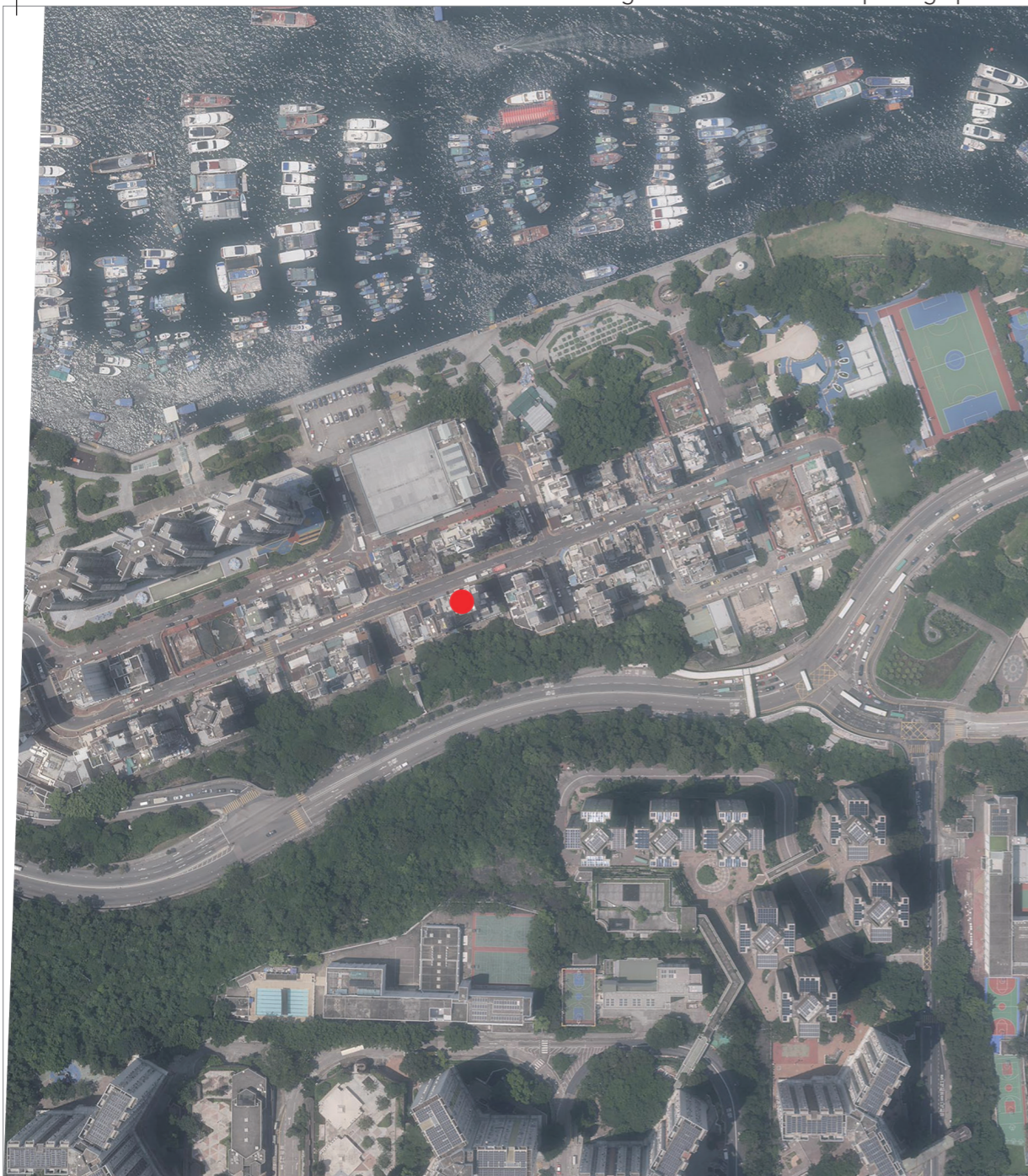
● 發展項目的位置  
Location of the Development

備註：因技術性問題，此鳥瞰照片所顯示的範圍超過《一手住宅物業銷售條例》的規定。  
Note: Due to technical reasons, this aerial photograph has shown more than the area required under the Residential Properties (First-hand Sales) Ordinance.

## 7 發展項目的鳥瞰照片 AERIAL PHOTOGRAPH OF THE DEVELOPMENT

鳥瞰照片並不覆蓋本空白範圍

This blank area falls outside the coverage of the relevant aerial photograph



資料/地圖/鳥瞰照片由空間數據共享平台提供，香港特別行政區政府為知識產權擁有人。  
The Data/Map/Aerial Photograph is/are provided by the CSDI Portal and intellectual property rights are owned by the Government of the HKSAR.

香港特別行政區政府地政總署測繪處版權所有，未經許可，不得複製。  
Survey and Mapping Office, Lands Department, The Government of HKSAR © Copyright reserved – reproduction by permission only.

摘錄自地政總署測繪處於2024年8月7日在6,000呎飛行高度拍攝之鳥瞰照片，編號為E226255C。  
Adopted from part of the aerial photograph taken by the Survey and Mapping Office of Lands Department at a flying height of 6,000 feet, Photo No. E226255C, dated 7 August 2024.

● 發展項目的位置  
Location of the Development

備註：因技術性問題，此鳥瞰照片所顯示的範圍超過《一手住宅物業銷售條例》的規定。

Note: Due to technical reasons, this aerial photograph has shown more than the area required under the Residential Properties (First-hand Sales) Ordinance.